

SIMPSON

Strong-Tie



A34



A35



DTC



H1



H2.5



HUS26

| | | |
|----------------|--------------------------------------|--|
| A34/A35 | Framing anchor | versatile connectors used for a variety of framing applications; 18 ga. galvanized |
| AB | Adjustable post base | secures a post to a finished concrete surface; 16 or 18 ga. galvanized |
| ABU | Adjustable post base uplift | secures a post to a finished concrete surface; 16 or 18 ga. galvanized |
| AC | Post cap/End post | two piece design of the AAC post caps makes it easy to install; 18 ga. galvanized |
| ASG | Storm Guard | high capacity truss tie down- single truss |
| CB | Heavy anchors | ideal for heavy column bases or when high structural values and durable performance are needed; gray painted finish |
| CC | Column cap | for heavy duty post-beam construction; gray corrosion resistant paint finish |
| CMST | Coil strap | in convenient cartons for easy dispensing, ideal for general-purpose applications; 12 to 16 ga. galvanized |
| CS | Coil strap | in convenient cartons for easy dispensing, ideal for general-purpose applications; 16 to 22 ga. galvanized |
| DTC | Roof truss clip | provides lateral stability to truss bottom cords, slotted holes adjust for proper load distribution; 18 ga. galvanized |
| ECC | End column cap | designed to be used with the need to drill bolt holes, simplifying the installation and maintaining wood cross section |
| EPC | End post cap | provides a positive connection for post-to-beam applications |
| F | Panelized hanger | specifically engineered for the panelized roof construction industry; 18 ga. galvanized steel |
| FHA | Strap | "Boss" strap ties are up to 3 times faster to install with your nail gun |
| GLB | Beam seat, | over concrete pilasters as a bearing plate and beam to concrete connection; corrosion resistant primer finish |
| H | Hurricane tie, | provides wind and earthquake connections for rafters, trusses and other roof systems; 16 or 18 ga. galvanized |
| HD | Holdown | ties shear wall panels to the foundation, transfers tension loads between floors; corrosion resistant primer finish |
| HDQ | Screw Type Anchor Downs | heavy gauge load transfer plate reduces anchor down deflection |
| HGUS | Face mount hanger | provides high uplift design loads for many truss connection needs; 11 or 12 ga. |
| HPAHD | Holdown | ties shear wall panels to the foundation; 10 or 12 ga. galvanized |
| HTA | Embedded truss anchor | a higher capacity alternative to the TA model with 2 rows of nails |
| HTT | Tension tie | provides a full range of load capacity for retrofitting or new construction; 11 ga. galvanized |
| HU | Face mount hanger | for heavy duty face mount applications, optional triangle holes are provided for increased nailing capacity; 16 ga. |
| HUS | Face mount hanger | provides high uplift design loads for many truss connection needs; 14 or 16 ga. |
| ITT | Top mount hanger | designed especially for smaller wood I-Joist or Engineered Wood Product sizes; 18 ga. galvanized |
| JB | Top mount hanger, | provides economical production framing for pre-nailing hanger onto carrying members; 18 ga. galvanized steel |
| L | Clip anchors/skewed | can be nailed to concrete slabs to hold posts or studs, or for high uplift conditions; 18 ga. galvanized steel |
| LL | Light framing angle | versatile reinforcing angles that are nailed to reinforce intersecting wood members; 12 or 18 ga. galvanized steel |
| LB | Hangers | can cover medium to heavy beam and purlin applications |
| LSSU | Light sloped/skewed | used to connect rafters to ridge beams in vaulted roof structures |
| LSTA | Tie strap | designed for use on 1½" wood members, 3" center to center nailing reduces the chance of splitting; 18 or 20 ga. galvanized |
| LSU | Hanger slope/skew | sloped/skewed hangers offer further standardization and economy |
| LTHJR/L | Universal hip and jack hanger | works right or left hand |



| | | |
|-------------------|-------------------------------------|--|
| LTT | Tension tie | designed for 2x joist purlins and the ALTT20B is for nail or bolt applications; 12 or 18 ga. galvanized |
| LTTI | Tension tie hanger | designed for 2x joist purlins |
| LU | Face mount joist hanger | design optimized to provide strength at an economical price; 20 ga. |
| LUS | Slant nail hanger face mount | provides high uplift design loads for many truss connection needs; 18 ga. |
| MAS | Mudsill anchor | fast and simple nail attachment into to the mudsill or directly to the stud; 16 ga. galvanized steel |
| MIT | Medium top mount hanger | used for both residential and commercial purposes, fully die-formed; 16 ga. galvanized steel |
| MST | Tie strap | for use on 3" or wider wood members including double 2 x 4's; 12 ga. galvanized |
| MTHM | Multiple medium truss hanger | single non-welded formation for medium to high load capacity hangers; 12 ga. galvanized steel |
| MTT | Tension tie | provides a full range of load capacity for retrofitting or new construction; 12 ga. galvanized |
| OT | Hanger tie decorative | rustic notched ornamental appearance that is highly functional |
| PA | Purlin anchor | used to tie wood members to concrete; 12 ga. galvanized |
| PAHD | Holddown | used to tie shear wall panels to the foundation; 12 ga. galvanized |
| PAI / PATM | Purlin anchor | used to tie wood members to concrete; 12 ga. galvanized |
| PBV | Viga post base | hidden standoff post base for carved posts |
| PC | Post cap/End post cap | for beam-over-post connections or where splice occurs; 12 ga. galvanized steel |
| PHD | Holddown | ties shear wall panels to the foundation, transfer tension loads between floors; 10, 12 or 14 ga. galvanized |
| PSC | Plywood clip | galvanized steel available in a variety of sizes |
| RS | Coiled strapping | 1 1/4" wide in cartons with 25' or longer coils |
| RSP | Stud plate tie | fastest and easiest way to connect studs to double or single plates; 18 ga. galvanized |
| ST | Tie strap | ideal straps for tying headers to framing members and many other wood to wood connections; 16 ga. galvanized |
| STC | Roof truss clip | provides lateral stability to truss bottom cords, slotted holes adjust for proper load distribution; 18 ga. galvanized |
| SUL/R | Face mount skewed | 45 degree skewed hanger; 16 ga. |
| TC | Truss clip braces | truss or girder load is transferred by the TCB to the plate for conditions with limited bearing; 18 ga. galvanized steel |
| THA | Adjustable truss clip | long header straps can be field-bent to truss' height; 16 and 18 ga. galvanized steel |
| TP | Nail plate | for truss repairs or construction/splice applications on wood-to-wood splices; 20 ga. galvanized steel |
| TS | Twist tie strap | provides fast simple hanging of joists at right angles and for securing joists to a strongback; 16 ga. galvanized steel |
| TSB | Truss brace | automatically spaces the trusses at the proper 24" o.c. as it's installed with nail gun |
| U | Face mount | thicker gauge material than the ALU series and come in 2x thru 6x lumber sizes; 16 or 18 ga. |
| W | Top mount | versatile and well adapted to many roof and floor applications; 12 ga. top flange/12 ga. stirrup, corrosion-resistant primer |
| WB | Wall bracing | used to prevent wall racking, replaces conventional 1 x 4 wood let-in brace; 16 ga. galvanized |
| WNP | Top mount | versatile and well adapted to many roof and floor applications; 7 ga. top flange/12 ga. stirrup, corrosion-resistant primer |
| Z | Z-Clips | used to support solid blocking on roof, floor or wall systems; 12, 20 or 28 ga. galvanized |



LUS26



PA18



RSP4



THA213



TSB2-24



THJ26



Power-Stud™ Concrete Anchor



FEATURES

- One-piece fully threaded, wedge style anchor available in carbon steel or stainless steel
- Threaded, Rod Hanger and Tie-Wire versions are designed for use in solid concrete
- Drill bit diameter needed for proper installation is the same as the anchor diameter

ANCHOR SIZES AND STYLES

| CAT. NO. | SIZE | MIN. EMBED. | THREAD LENGTH | STD. BOX | STD. CTN. | WT./100 |
|----------|---------------|-------------|---------------|----------|-----------|---------|
| 7417 | 3/8" x 7" | 1-5/8" | 5-7/8" | 50 | 200 | 21 |
| 7420 | 1/2" x 2-3/4" | 2-1/4" | 1-3/8" | 50 | 200 | 18 |
| 7422 | 1/2" x 3-3/4" | 2-1/4" | 2-3/8" | 50 | 200 | 23 |
| 7423 | 1/2" x 4-1/2" | 2-1/4" | 3-1/8" | 50 | 200 | 28 |
| 7424 | 1/2" x 5-1/2" | 2-1/4" | 4-1/8" | 50 | 150 | 32 |
| 7426 | 1/2" x 7" | 2-1/4" | 5-5/8" | 25 | 100 | 44 |
| 7427 | 1/2" x 8-1/2" | 2-1/4" | 7-1/8" | 25 | 100 | 46 |
| 7430 | 5/8" x 3-1/2" | 2-3/4" | 2" | 25 | 100 | 40 |
| 7432 | 5/8" x 4-1/2" | 2-3/4" | 3" | 25 | 100 | 54 |
| 7433 | 5/8" x 5" | 2-3/4" | 3-1/2" | 25 | 100 | 57 |
| 7434 | 5/8" x 6" | 2-3/4" | 4-1/2" | 25 | 75 | 64 |
| 7436 | 5/8" x 7" | 2-3/4" | 5-1/2" | 25 | 75 | 72 |
| 7438 | 5/8" x 8-1/2" | 2-3/4" | 7" | 25 | 75 | 84 |
| 7439 | 5/8" x 10" | 2-3/4" | 8-1/2" | 25 | 75 | 100 |
| 7440 | 3/4" x 4-1/4" | 3-3/8" | 2-3/8" | 20 | 60 | 70 |
| 7441 | 3/4" x 4-3/4" | 3-3/8" | 2-7/8" | 20 | 60 | 76 |
| 7442 | 3/4" x 5-1/2" | 3-3/8" | 3-5/8" | 20 | 60 | 85 |
| 7444 | 3/4" x 6-1/4" | 3-3/8" | 4-3/8" | 20 | 60 | 95 |
| 7446 | 3/4" x 7" | 3-3/8" | 5-1/8" | 20 | 60 | 105 |
| 7448 | 3/4" x 8-1/2" | 3-3/8" | 6-5/8" | 10 | 40 | 120 |
| 7449 | 3/4" x 10" | 3-3/8" | 8-1/8" | 10 | 30 | 135 |
| 7451 | 3/4" x 12" | 3-3/8" | 10-1/8" | 10 | 30 | 155 |
| 7450 | 7/8" x 6" | 3-7/8" | 2-3/4" | 10 | 40 | 120 |
| 7452 | 7/8" x 8" | 3-7/8" | 4-3/4" | 10 | 40 | 160 |
| 7454 | 7/8" x 10" | 3-7/8" | 6-3/4" | 10 | 30 | 200 |

Wedge-Bolt® Concrete Anchor



FEATURES

- For use in concrete, block, brick and stone
- One piece heavy duty anchor with a finished hex head
- Easy to identify, removable, and vibration resistant

ANCHOR SIZES

| CAT. NO. | SIZE | MIN. EMBED. | THREAD LENGTH | STD. BOX | STD. CTN. | WT./100 |
|----------|-----------|-------------|---------------|----------|-----------|---------|
| 7246 | 1/2" x 4" | 1-3/4" | 3-3/4" | 50 | 150 | 25 |
| 7248 | 1/2" x 5" | 1-3/4" | 3-3/4" | 25 | 100 | 28 |
| 7250 | 1/2" x 6" | 1-3/4" | 3-3/4" | 25 | 75 | 34 |
| 7260 | 5/8" x 3" | 2-1/2" | 2-3/4" | 25 | 100 | 28 |
| 7264 | 5/8" x 5" | 2-1/2" | 3-3/4" | 25 | 75 | 39 |
| 7266 | 5/8" x 6" | 2-1/2" | 3-3/4" | 25 | 75 | 47 |
| 7280 | 3/4" x 3" | 2-1/2" | 2-3/4" | 20 | 60 | 48 |
| 7284 | 3/4" x 5" | 2-1/2" | 3-3/4" | 20 | 60 | 70 |
| 7286 | 3/4" x 6" | 2-1/2" | 3-3/4" | 20 | 60 | 86 |
| 7288 | 3/4" x 8" | 2-1/2" | 3-3/4" | 10 | 40 | 100 |

SDS-Plus Wedge-Bit™

ANCHOR SIZES AND STYLES

| CAT. NO. | DRILL SIZE (IN.) | USABLE LENGTH (IN.) | OVERALL LENGTH (IN.) | STD. POUCH | WT./DOZEN |
|----------|------------------|---------------------|----------------------|------------|-----------|
| 1312 | 1/4 | 2 | 4 | 1 | 1 |
| 1314 | 1/4 | 4 | 6 | 1 | 1-1/4 |
| 1316 | 3/8 | 4 | 6 | 1 | 2 |
| 1318 | 3/8 | 6 | 8 | 1 | 2-1/2 |
| 1320 | 1/2 | 4 | 6 | 1 | 2-3/4 |
| 1322 | 1/2 | 8 | 10 | 1 | 4-1/4 |
| 1324 | 5/8 | 6 | 8 | 1 | 4-1/2 |
| 1326 | 5/8 | 10 | 12 | 1 | 6-1/4 |
| 1328 | 3/4 | 6 | 8 | 1 | 5 |
| 1330 | 3/4 | 10 | 12 | 1 | 6-3/4 |

Spline Wedge-Bit

ANCHOR SIZES AND STYLES

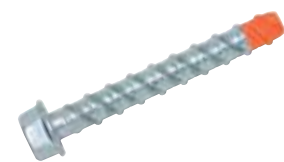
| CAT. NO. | DRILL SIZE (IN.) | USABLE LENGTH (IN.) | OVERALL LENGTH (IN.) | STD. POUCH | WT./DOZEN |
|----------|------------------|---------------------|----------------------|------------|-----------|
| 1340 | 1/2 | 8 | 13 | 1 | 11 |
| 1344 | 5/8 | 8 | 13 | 1 | 12-1/2 |
| 1348 | 3/4 | 8 | 13 | 1 | 15 |

SDS-Max Wedge-Bit

ANCHOR SIZES AND STYLES

| CAT. NO. | DRILL SIZE (IN.) | USABLE LENGTH (IN.) | OVERALL LENGTH (IN.) | STD. POUCH | WT./DOZEN |
|----------|------------------|---------------------|----------------------|------------|-----------|
| 1354 | 1/2 | 8 | 13 | 1 | 12 |
| 1356 | 5/8 | 8 | 13 | 1 | 13 |
| 1358 | 3/4 | 8 | 13 | 1 | 15 |

Wedge-Bolt® OT (Orange Tip)



FEATURES

- Specifically engineered for the racking, storage and material handling industry
- Finished hex head design
- Unlike Blue-Tip Wedge-Bolt, can be installed with regular ANSI standard carbide drill bits

ANCHOR SIZES

| CAT. NO. | DIAMETER & LENGTH | ANSI BIT DIA. | CLEARANCE HOLE DIA. | MIN. EMBED. | THREAD LENGTH | BOX QTY. | CTN. QTY. |
|----------|-------------------|---------------|---------------------|-------------|---------------|----------|-----------|
| 7215 | 1/4" x 3" | 1/4" | 3/8" | 1" | 2-3/4" | 100 | 500 |
| 7216 | 3/8" x 4" | 3/8" | 1/2" | 1-1/2" | 3-3/4" | 50 | 250 |
| 7217 | 1/2" x 4" | 1/2" | 5/8" | 1-3/4" | 3-3/4" | 50 | 150 |
| 7218 | 1/2" x 5" | 1/2" | 5/8" | 1-3/4" | 3-3/4" | 25 | 100 |
| 7214 | 1/2" x 6" | 1/2" | 5/8" | 2-1/2" | 3-3/4" | 25 | 75 |
| 7227 | 5/8" x 6" | 5/8" | 3/4" | 2-1/2" | 3-3/4" | 25 | 75 |

Not all products shown in this catalog are stocked at all Mid-Atlantic Fasteners locations



AC100 PLUS™ All Weather Adhesive



FEATURES

- High-strength, non-sag, anchoring mortar for bonding threaded rod and reinforcing bar into concrete and masonry

AC100 PLUS™ CARTRIDGES

| CAT. NO. | DESCRIPTION | STD. BOX | STD. CARTON |
|----------|----------------------------|----------|-------------|
| 8480 | 8 oz. Cartridge | 12 | 12 |
| 8486 | 12 oz. Cartridge | 12 | 12 |
| 8490 | 30 oz. Cartridge | 12 | 12 |
| 8478 | 10 oz. Quik Shot Cartridge | 12 | 36 |
| 8462 | 5.5 oz. Pusher Cartridge | 12 | 36 |
| 8464 | 5.5 oz. Twister Cartridge | 12 | 36 |

TriggerFoam™



FEATURES

- One-part polyurethane expanding foam; sets and cures by reacting to the air
- Applies or fills many elements including concrete, masonry, wood, metal, foamboard, and PVC

TRIGGERFOAM™ CARTRIDGES

| CAT. NO. | DESCRIPTION | STD. BOX | STD. CARTON | STD. PALLET |
|----------|--------------------|----------|-------------|-------------|
| 8136 | TriggerFoam 29 oz. | 12 | 12 | 612 |



Trak-It®

FEATURES

- C3 Tool used for light-duty static applications such as drywall track to concrete, block or steel, lath to concrete or block, furring strips to concrete or block, and plywood to concrete or block base materials

Item No. C3

TRAK-IT® I-BEAM 1/2" PIN (ROLLED AND STEP SHANK)

| CAT. NO. | DESCRIPTION | STD. BOX | STD. CARTON |
|----------|----------------|----------|-------------|
| 55020 | 1/2" Steel Pin | 1000 | 5000 |

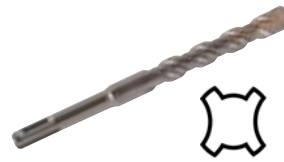
TRAK-IT® STANDARD PINS (ROLLED POINT)

| CAT. NO. | DESCRIPTION | STD. BOX | STD. CARTON |
|----------|-------------|----------|-------------|
| 55022 | 3/4" Zinc | 1000 | 5000 |
| 55024 | 1" Zinc | 1000 | 5000 |
| 55026 | 1-1/4" Zinc | 1000 | 5000 |
| 55028 | 1-1/2" Zinc | 1000 | 5000 |

TRAK-IT® STICK-E LATHING WASHER

| CAT. NO. | DESCRIPTION | STD. BOX | STD. CARTON |
|----------|---------------|----------|-------------|
| 55040 | 1" with Holes | 100 | 1000 |

S-4 Plus™ SDS Carbide Drill Bits



FEATURES

- Designed for use in a rotary hammer equipped with an SDS (slanted drive shaft) type chuck
- Used to drill in concrete, block, brick and soft stone

DRILL BIT SIZES

| CAT. NO. | DRILL SIZE (IN.) | USABLE LENGTH (IN.) | STD. POUCH | WT./DOZEN |
|----------|------------------|---------------------|------------|-----------|
| 0346 | 1/2" x 6" | 4" | 1 | 2-3/4 |
| 0349 | 1/2" x 12" | 10" | 1 | 5-1/2 |
| 0351 | 1/2" x 18" | 16" | 1 | 6-1/2 |
| 0361 | 5/8" x 12" | 10" | 1 | 6-1/4 |
| 0362 | 5/8" x 18" | 16" | 1 | 10 |
| 0370 | 3/4" x 12" | 10" | 1 | 6-3/4 |
| 0371 | 3/4" x 18" | 16" | 1 | 12 |
| 0376 | 7/8" x 12" | 10" | 1 | 9 |
| 0377 | 7/8" x 16" | 16" | 1 | 15 |

.300 Head Drive Pins



FEATURES

- Designed for permanently fastening a fixture to concrete, masonry and A36 structural steel
- Available with 0.145" diameter shank in various lengths

DRIVE PIN SIZES (.300 HEAD DRIVE PINS)

| CAT. NO. | SHANK LENGTH | STD. BOX | STD. CARTON | HEAD DIA. | SHANK DIA. | WT./100 |
|----------|--------------|----------|-------------|-----------|------------|---------|
| 50022 | 3/4" | 100 | 5000 | .300 | .145 | .5 |
| 50026 | 1" | 100 | 5000 | .300 | .145 | .6 |
| 50032 | 1-1/4" | 100 | 1000 | .300 | .145 | .8 |
| 50036 | 1-3/4" | 100 | 1000 | .300 | .145 | 1.1 |
| 50040 | 2-1/4" | 100 | 1000 | .300 | .145 | 1.2 |
| 50044 | 2-1/2" | 100 | 1000 | .300 | .145 | 1.4 |
| 50048 | 3" | 100 | 1000 | .300 | .145 | 1.9 |

DRIVE PIN SIZES (.300 HEAD DRIVE PINS WITH 7/8" WASHER)

| CAT. NO. | SHANK LENGTH | STD. BOX | STD. CARTON | HEAD DIA. | SHANK DIA. | WT./100 |
|----------|--------------|----------|-------------|-----------|------------|---------|
| 50094 | 1-1/2" | 100 | 1000 | .300 | .145 | 2.1 |
| 50098 | 2-1/2" | 100 | 1000 | .300 | .145 | 2.7 |

PA3500™

FEATURES



- Powder tool, drives 1/2" to 3" pin lengths (.27 caliber)
- Used in ceiling clip assemblies, metal track, door frames, concrete forms, basket clips, electrical boxes, duct straps and more

Item No. PA3500

Safety Strip®

.27 CALIBER SAFETY STRIP FOR P3500/PA3500

| CAT. NO. | DESCRIPTION | STD. BOX | STD. CARTON | WT./100 |
|----------|--------------------------|----------|-------------|---------|
| 50622 | Green, .27 safety strip | 100 | 20000 | .3 |
| 50626 | Yellow, .27 safety strip | 100 | 20000 | .3 |
| 50630 | Red, .27 safety strip | 100 | 20000 | .3 |